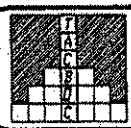
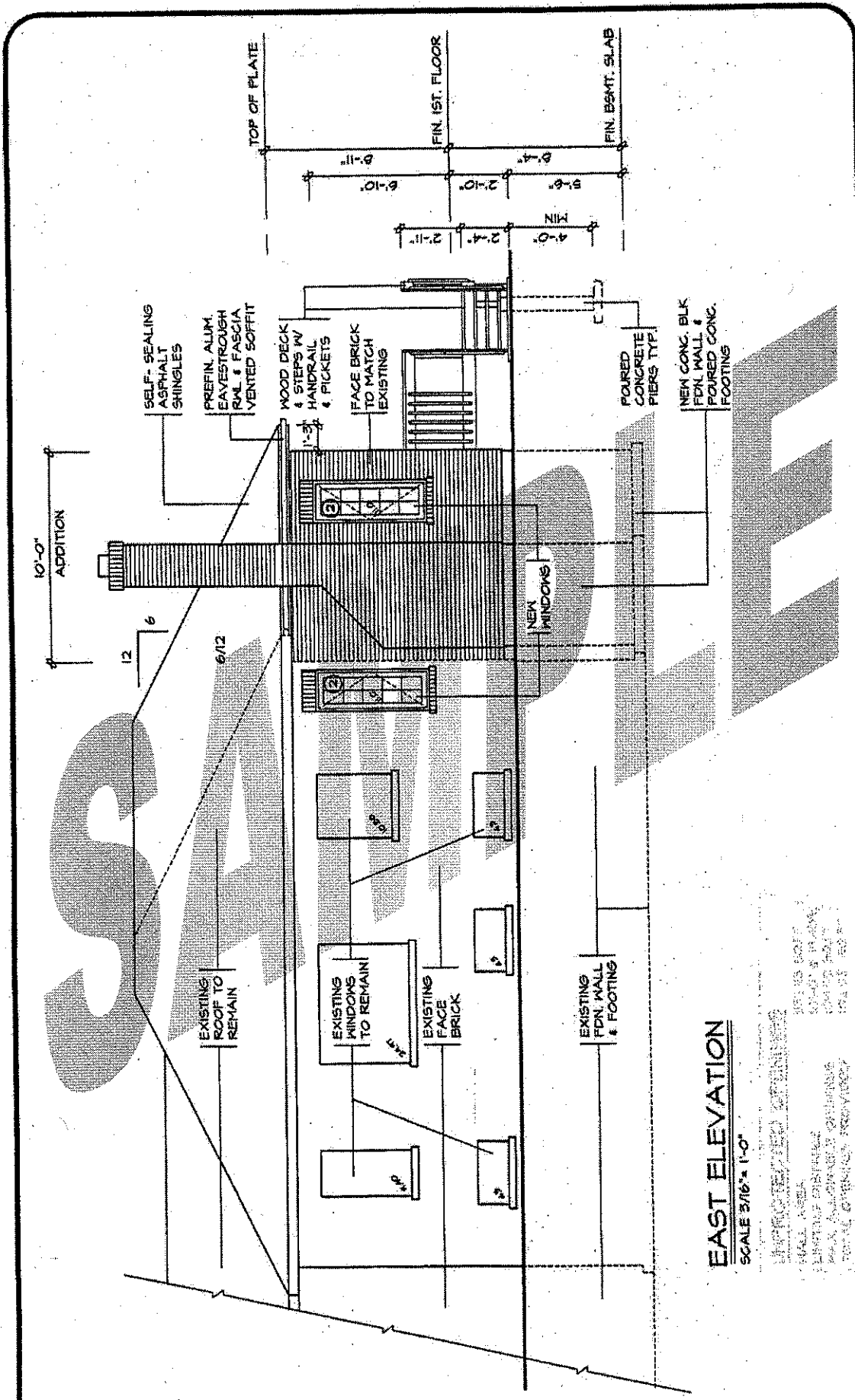


**NORTH ELEVATION**  
SCALE 3/16" = 1'-0"



SAMPLE DRAWINGS FOR  
PERMIT APPLICATION  
ELEVATION

DWG. NO.  
**A06**  
07-98



**EAST ELEVATION**

SCALE 3/16" = 1'-0"

APPROVED DRAWING  
 DATE: 10/15/98  
 DRAWN BY: [illegible]  
 CHECKED BY: [illegible]  
 TOTAL SQUARE FOOTAGE: 104.15 SQ. FT.



SAMPLE DRAWINGS FOR PERMIT APPLICATION  
 ELEVATION

DWG. NO.

**A07**

07-98

